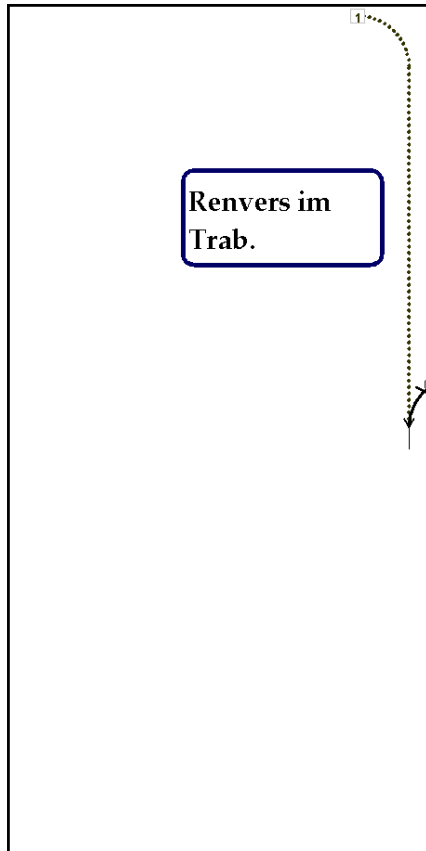
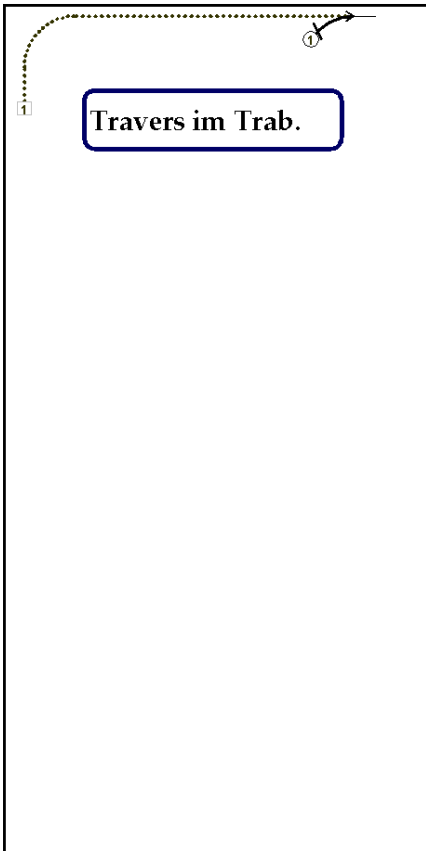
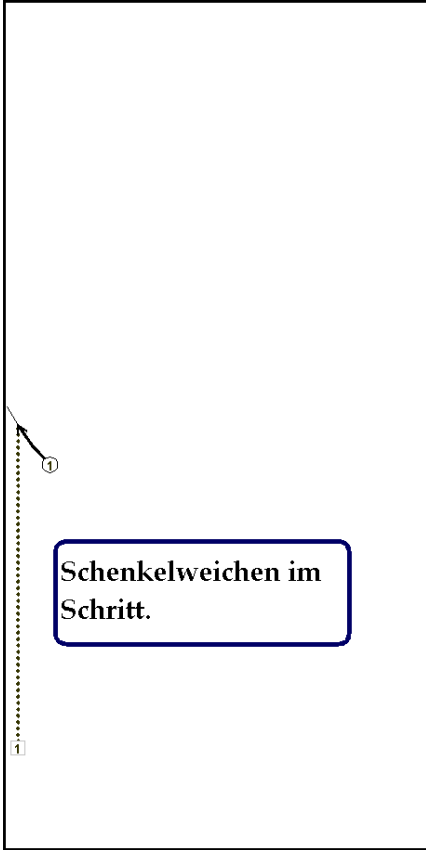


Seitengänge

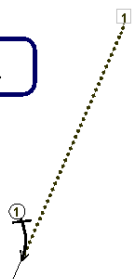
Autor: Andreas Zottmann

Reitbahn: 20m x 40m

Zur Demonstration: Schenkelweichen, Schulterherein, Travers, Renvers, Traversale

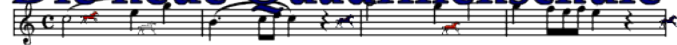


Traversale im Trab.



Mehr Informationen zur Notation und Software auf <http://www.quadrillenschule.de>

Die neue Quadrillenschule



Professionelle Dressurkürplanung am PC